



## Directions for Chevy FRONT Drill-less installation 2020-current 2500/3500/Dually

Included hardware: 6- Stainless Steel Black Oxide (SSBO) #8x1 1/4" screws; 6- (SSBO) #10 washers

Thread locker is recommended on all screws.

**NOTE:** *As you progress with the install, check that the mud flap remains square and plumb to the tire.*

Step 1: Un-pack your new mud flaps. Smooth side is rear side, grooved side faces the tire, tapered corner is the outside top edge. If applicable, Stainless Steel weights face rearwards.

Step 2: Remove factory screws located at points A,B, and C.

**Do not remove the screw at Point E.**

Step 3: Align the pre-drilled hole in the mud flap with factory hole B and thread the factory screw through the mud flap and into the factory hole. Leave slightly loose.

Step 4: Repeat step 4 at point A and C.

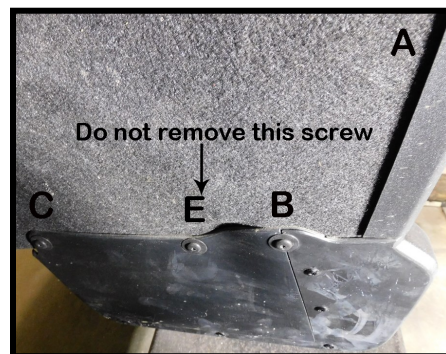
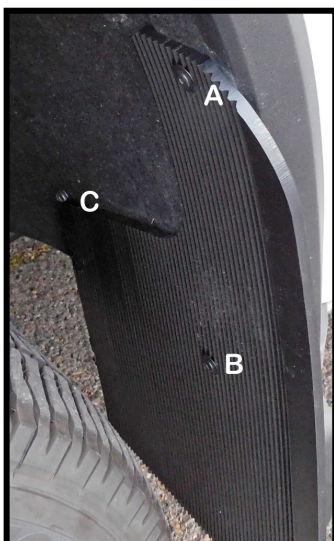
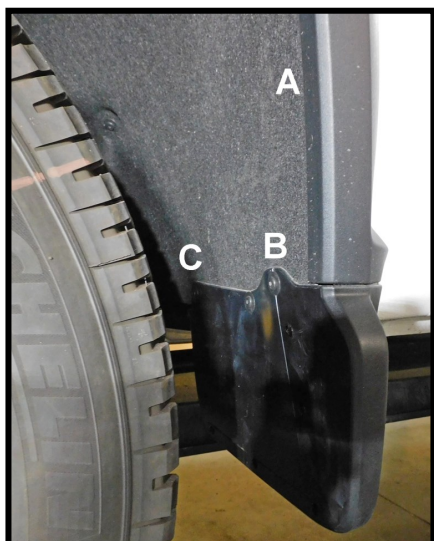
**Note** We have included longer screws and washers if needed.

Step 5: Check for proper alignment to the tire, and tighten the screws.

**Note:** Recheck every three months and retighten if necessary.

Add moisture to the mud flaps a couple times a year using furniture polish, leather or vinyl protectant.

IF YOU HAVE ANY QUESTIONS OR CONCERNS PLEASE GIVE US A CALL AT 541-245-9148



CF12 20,CF14 20, CF14L 20 , CF12 24 ZR2